

Redi Rig

RELEASE FLOAT



[The Release Float Design](#)

[Attaching The Float](#)

[Drifting Open Water](#)

[Bottom Structure](#)

[Back](#)

Snap



Float
Body



Release
Clamp



Release Float Components:

The snap at the top lets the unit slide on the line after being released

The float body is used to suspend baits at deep constant depths

The rubber release clamp grips line and releases after the hook set

1. Insert line in snap

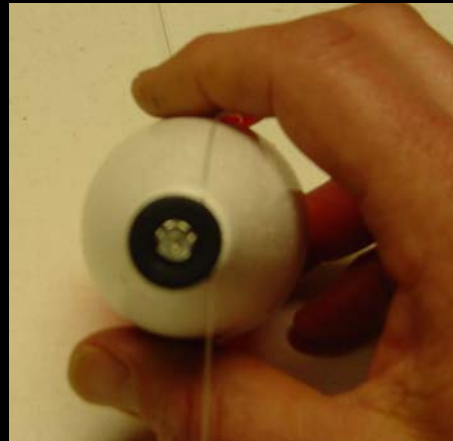


[Back](#)

2. Push down top and insert line in clamp

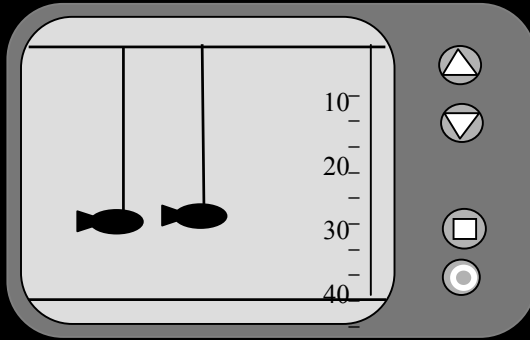


Insert line
across clamp
face



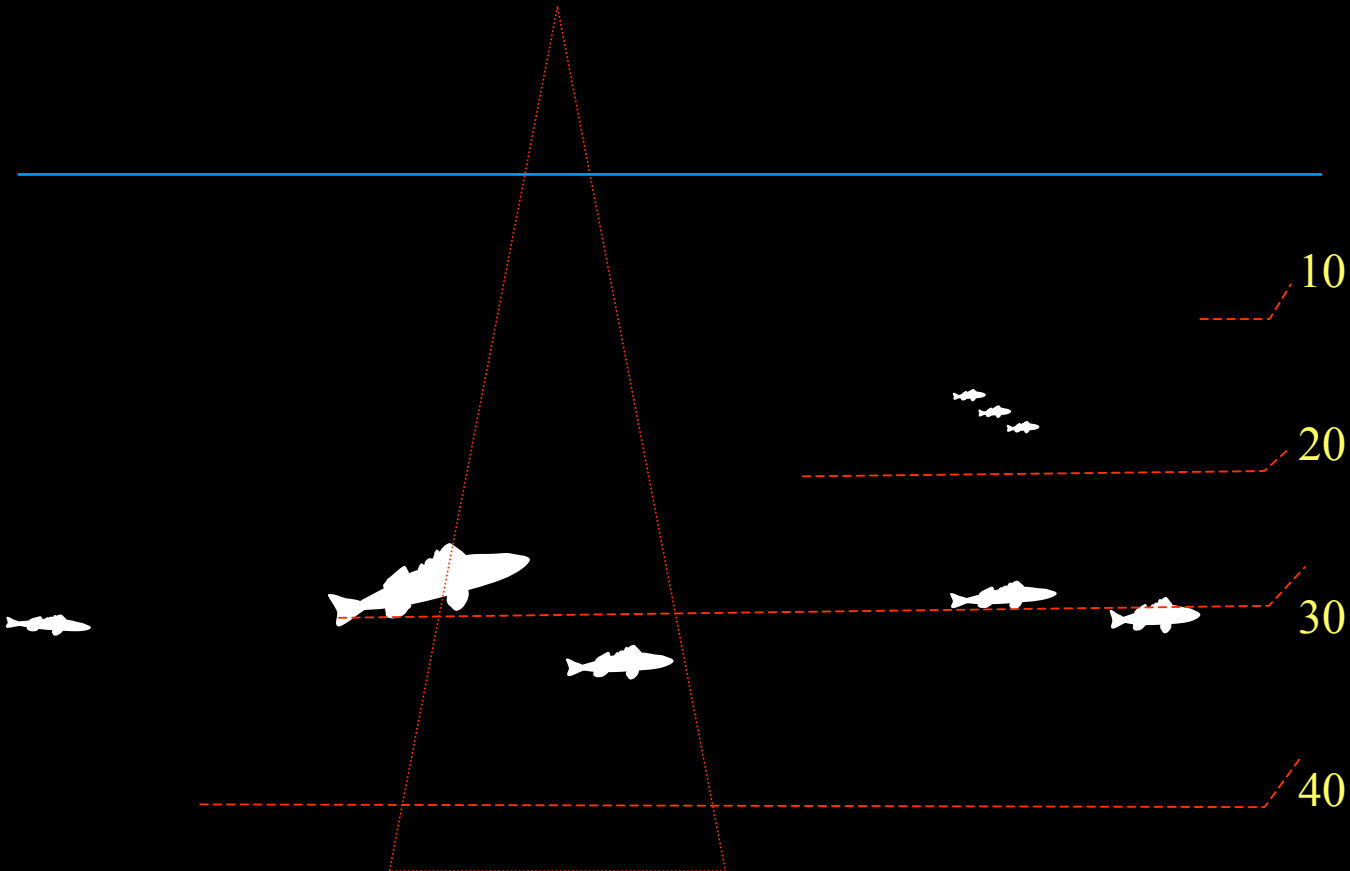
Note: The closer the line to the
center shaft the tighter the
release

- Use a fish finder to determine depth of suspended fish
- Lets say marks at 30ft...



[Next](#)

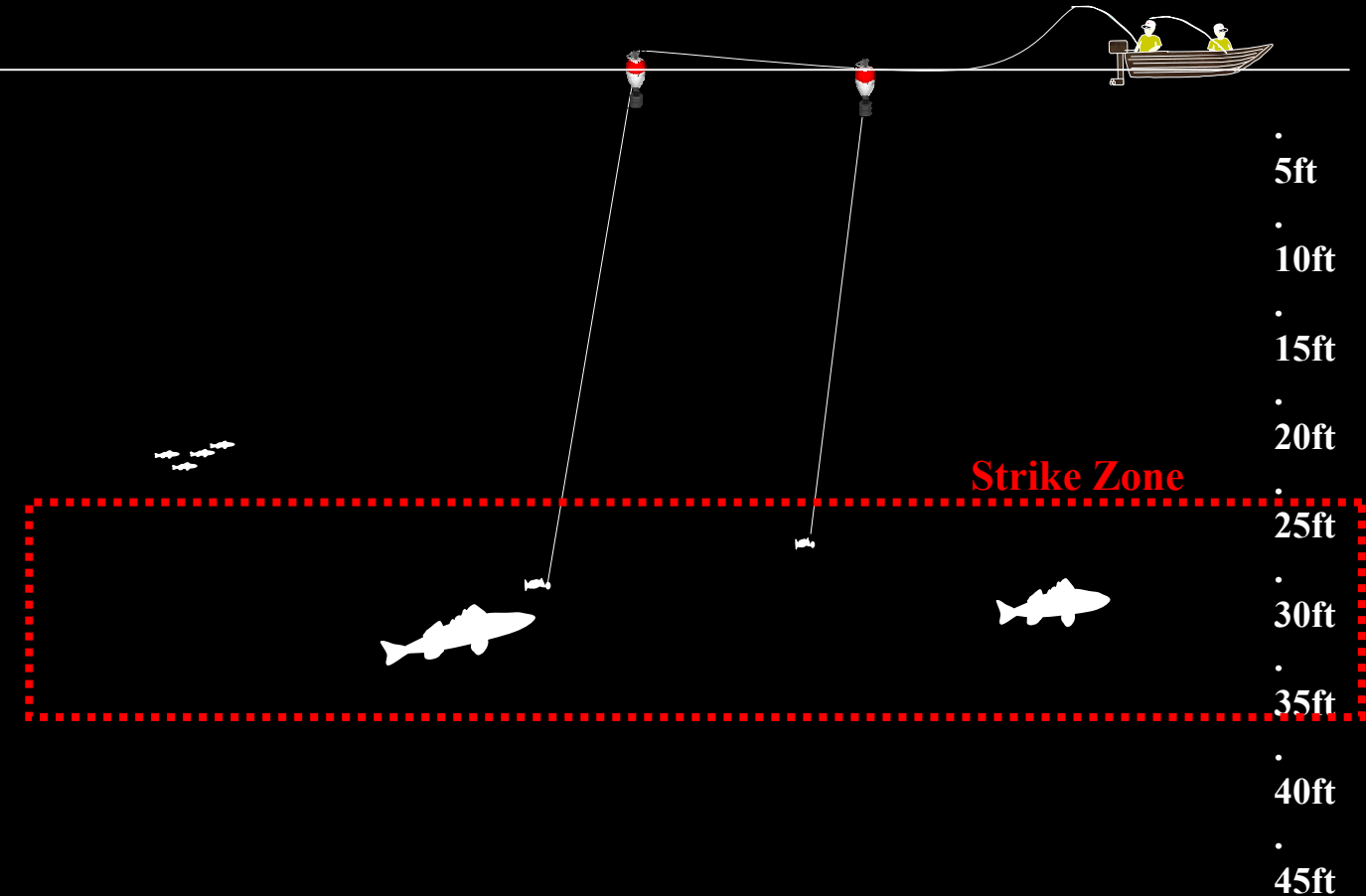
[Back](#)



- Let out 25ft of line
- Attach float
- Let out more line to drift rig away from boat
- Your bait is now held to drifted horizontally at 25ft
- Set more than one rod to comb area

[Next](#)

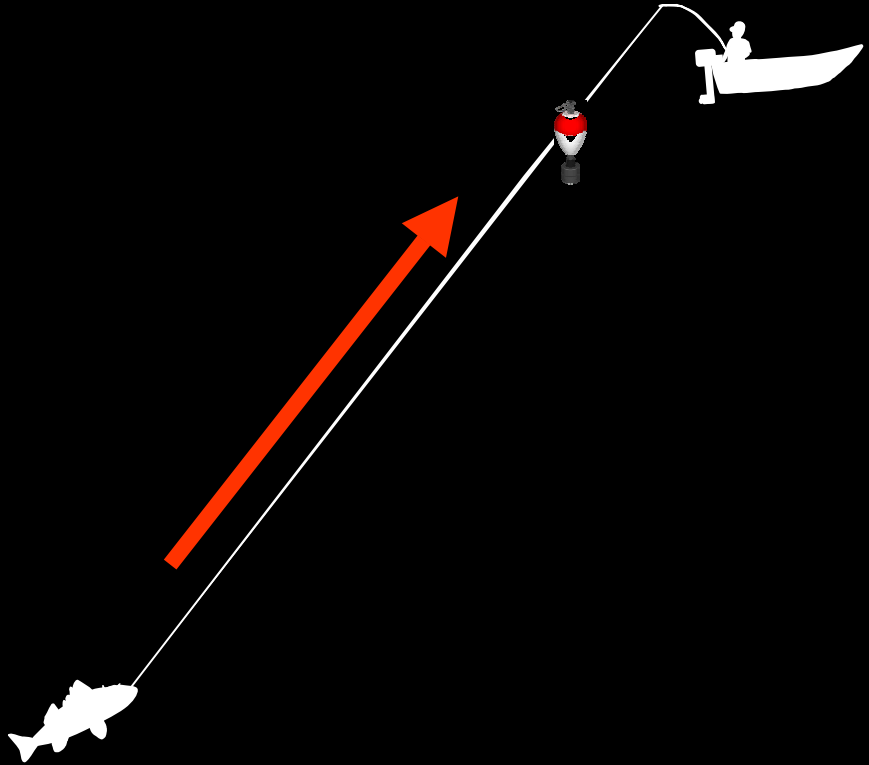
[Back](#)



- The float releases after you set the hook
- And slides up the line to the top of the water
- You land the fish without stopping

[Home](#)

[Back](#)



- Use the float to fish above heavy structure
- Anchor boat and let currents take the rig away from boat
- Or drift rig across lake

